

IIBCC – 2024  
Namaste

# An introduction to WMW Metal Fabrics Ltd.

## **C**MAX - FIBRE CEMENT FORMING SIEVES



## BVK Group Reliable & Sustainable



Founded  
1963



Integrated  
Weaving Plant



Employees  
300+



Equipment Origin  
Germany



Metal Volume  
650+ MT p.a.



Certifications  
Integrated IMS System  
with ISO, IATF, OHSAS  
and Environmental  
Management

EXPORTING TO  
**25+** COUNTRIES

WE ARE PRESENT WHEREVER  
OUR CUSTOMERS NEED US.



**BVK**  
GROUP



Celebrating 60+ Years  
(Since 1963)

## Overview

### ■ *India's leading Metal mesh weavers since 60+ years*

#### ■ Modern state-of-the-art manufacturing facility

- ⇒ High speed German rapier weaving looms
- ⇒ Ultrasonic cleaning
- ⇒ Special annealing - Heat treatment
- ⇒ Advanced seaming capabilities
- ⇒ Full certified and equipped R&D laboratory

#### ■ Strong market presence

- ⇒ A multitude of applications from Aerospace to Architecture
- ⇒ Exporting 40% of output to 25+ countries
- ⇒ >45% Market share in India in key markets

#### ■ Environmentally conscious organization

- ⇒ 80% power from Solar
- ⇒ 100% waste recycled or reused
- ⇒ ZERO discharge & ZERO emissions facility



**40<sup>+</sup>** DESIGNS SPECIFIC  
TO THE MACHINE AND  
APPLICATION TYPE

- 40RM + in continuous length
- 1.5M to 6.3M wide.
- Open Ended & Endless Diagonal seam



## Location & Infrastructure



Nearest sea port – The largest Indian port  
Navasheva Port - 3 days



Nearest Air port – Busiest Airport of India  
New Delhi - 0.5 days



*A View of our facility*



## Industries Served besides Fiber Cement

### Automotive

- Drive Technology
- Hydraulic Filter
- Filter
- EGR

### Chemical

- Filtration & Separation
- Distillation

### Food & Beverage

- Juicing

### Plastic & Polymer

- Fiber & Filaments



### Aerospace

- EMI Shielding

### Energy

- Electrolysis
- Fuel Cell

### Mining

- Coal washing
- Mineral separation
- FGD
- Fertilizers
- Gypsum

### Pulp & Paper

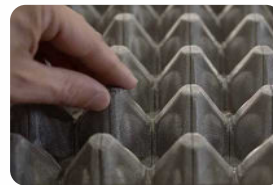
- Fiber Molding
- Paper Forming
- De-watering & Filtering
- Security Watermark



### Architecture

- Interiors
- Exteriors

### Electronics





## Why Sieves are the HEART of the machines

- This is where your product formation happens!  
Good sieve = Good formation = Good product
- A good sieve will give a better life expectancy with consistent results thus reducing downtime of the machine
- The sieve type and its seam decides the fiber retention and drainage parameters which will affect the sheet quality and fiber wastage.

This has a direct correlation to your cost / kg.



Image courtesy

**CMAX** - FIBRE CEMENT  
FORMING SIEVES

# OUR RANGE OF SOLUTIONS



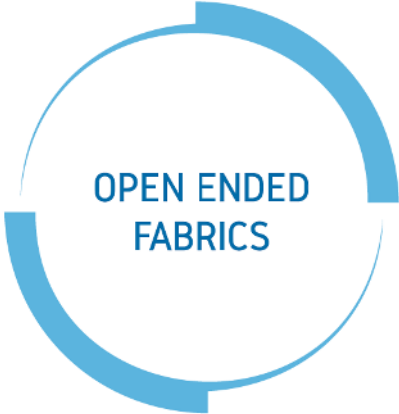
DIAGONAL SEAM  
MOULD COVERS



SECURITY PAPER  
MESHERS



DANDY COVERS



OPEN ENDED  
FABRICS



FILTER DISCS AND  
SPIN PACKS

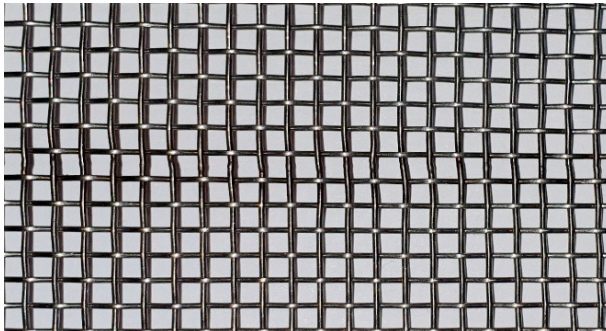


# SEAM DESIGNS

With more than 50 years of seaming expertise, our seams are strong, reliable, non-marking and are an integral part of the mesh itself. We undertake heavy designing and testing of our seams to ensure they remain intact and secure. These seam types are selected based on application & process needs.

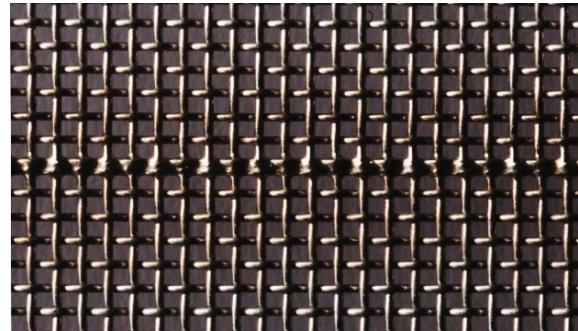
All seams are offered for single and for double width machines

### Plasma Seam



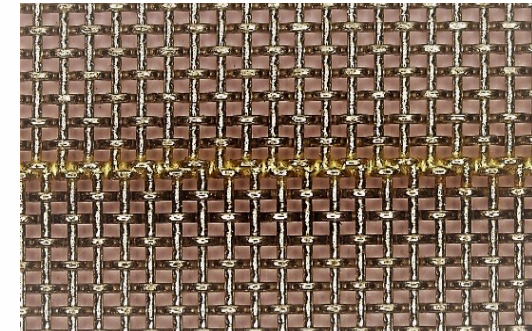
A technologically advanced endless joint. Each wire is individually welded to another with utmost precision under microscope. Suitable for all environments especially for highly corrosive applications as the entire seam is of SS 316L grade without any 2nd material present.

### Silver Seam



Most proven endless joint either diagonal or straight. Best for basic corrosive and formation applications. Made using a special silver alloy to withstand pressure and high heat.

### Gold Seam



Technologically robust seam for high speed and high corrosive environments where seam life and flatness is of prime importance. Made using a special gold alloy for added strength and durability

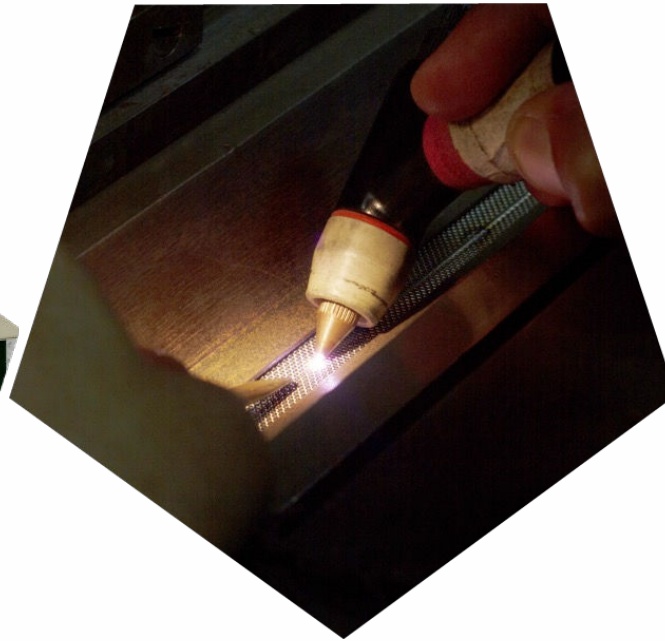




State of art German machines are used under a 'clean room environment' by our highly skilled technicians who are experienced in delivering a strong, stable and a durable seam with precision. These seam types are selected based on application & process needs.



Clean room environment  
to avoid contamination



Techniques evolved over  
Generations of R&D



Skilled Technicians for Auto  
& Semi Auto Seaming



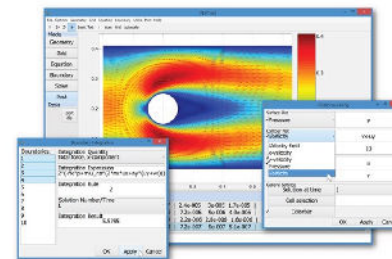
## Certified Processes

### Strong Internal Systems

- ✓ Conforming to ISO 9044 for international wire mesh standards
- ✓ 100% incoming Material Testing
- ✓ Retention and digitalization of data, available for tracking and rigor analysis with industry leading protection
- ✓ Focus on research and innovation with in-house Government recognized R&D center
- ✓ Updated with modern Test Instruments and Software for staying ahead



#### 1 R&D Prototyping



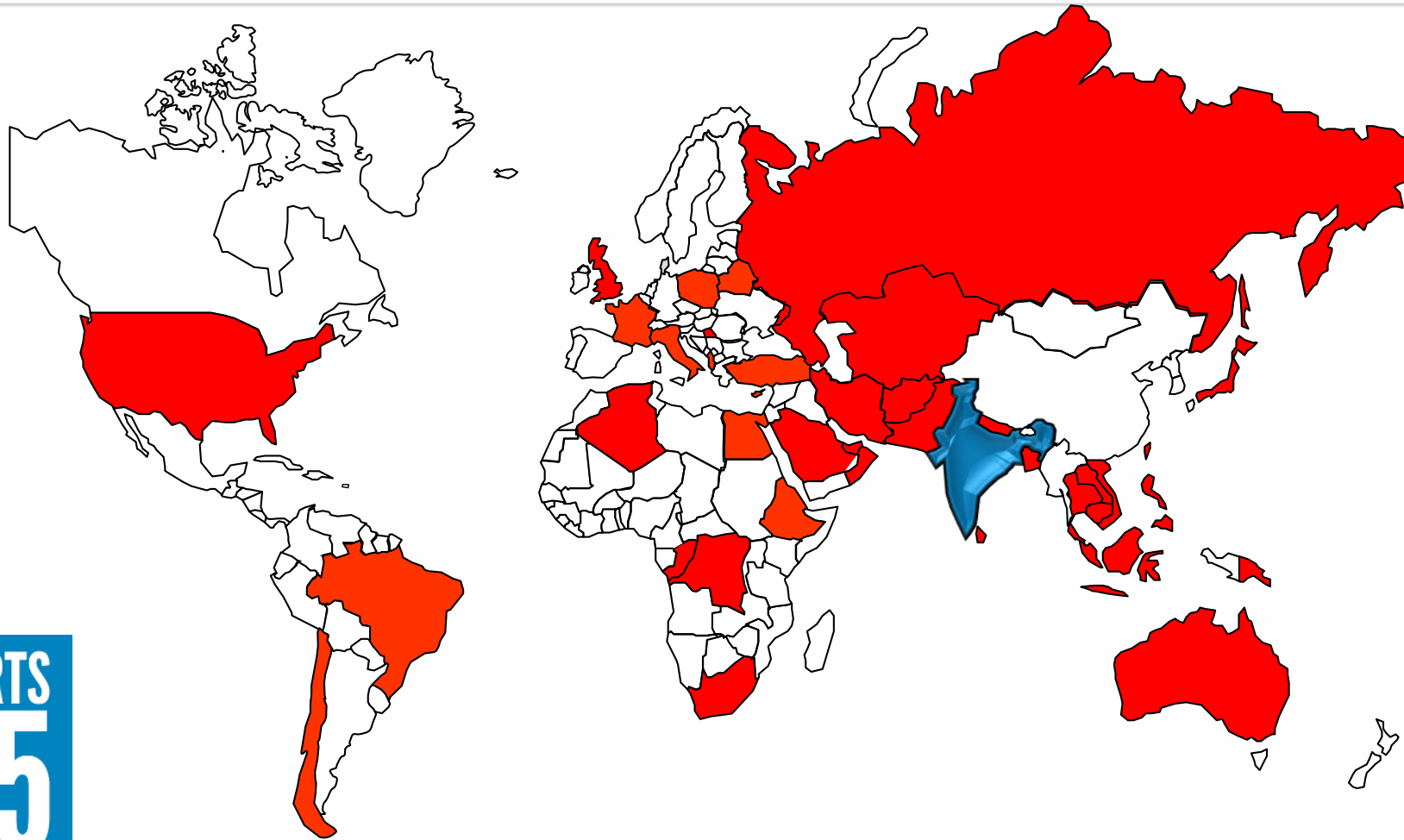
BVK uses Computational Fluid Dynamics (CFD) & rapid prototyping to analyze flow dynamics within the mesh structure.

#### 2 Integrated Process Harmonization



Process reliability ensures product accuracy which is a result of collaboration between us and our customers.





**EXPORTS  
OVER  
25  
COUNTRIES**

**We export our products worldwide to 25+ countries**





## Some of our Patrons

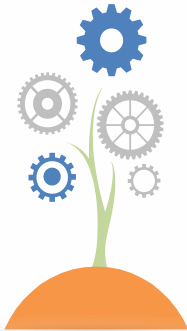


PT. SIAM-INDO GYPSUM INDUSTRY



# Future Growth

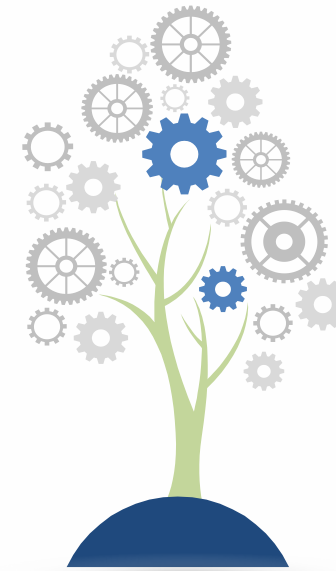
**01 Capacity Expansion**  
Investing USD 8 mill over 2 years for capacity & capability expansion



**02 New manufacturing facility**  
5x space under development for operational expansion in 2025



**03 Innovative products**  
Over the next 5 years, 50%+ sales will be generated from new products/new markets



## Responsibility in action.



### ESG compliant

WMW prioritizes Environmental, Social and Governance (ESG) objectives as a move towards reducing carbon emissions and achieving ESG goals. We demonstrate our dedication to sustainable energy practices and efficient Energy Management Systems (MES) by using 50% of our energy consumption from renewable sources. Our goal is to become 100% self-reliant with renewable sources and achieve our 'Net Zero' plan.



*"We use 80% Green Energy from Solar panels, to achieve our ESG goals."*

As a socially responsible organization,  
we support Disha Foundation



'Conde Nast'

Rated amongst the top 10 institutions  
for social volunteering in India

[www.dishafoundation.org](http://www.dishafoundation.org)

### Sustainable Packaging

We embrace packaging solution that are completely reusable and can be recycled and support a circular economy. Adopting 100% reusable and recyclable aligns with our sustainability efforts meeting our sustainability efforts and fulfilling corporate social responsibility objectives.



# Thank You

Looking Forward To See You At Our Stall



[www.wmwindia.com](http://www.wmwindia.com)

